



# PATTY LABEL

**description** One side coated paper made with E.C.F. (elemental chlorine free) ecological pulp. Glossy finish and light matt coating on the back.  
Wet-strength treatment suitable for labelling applications.

**range** size grain substance  
70x100 LG 80



**technical features**  
standard/instrument  
unit of measure

substance	VSA	opacity	cobb 60*	W.B.R.	tearing length	
ISO 536	ISO 534	ISO 2471	ISO 535	ISO 3781	ISO 1924	
g/m <sup>2</sup>	cm <sup>3</sup> /g	%	g/m <sup>2</sup>	%	m	
					long±10%	cross±10%
80 ± 3%	0,88	88 ± 2	15 ± 3	≥ 20	4300	3000

Whiteness - ISO 2470 (R457) - 89% ± 2  
Relative Humidity 50% ± 5

\*Wire side

**ecological features**



ELEMENTAL  
CHLORINE  
**FREE**  
GUARANTEED



**notes** The product is completely biodegradable.  
Special runs available upon request.

The Company reserves the right to modify the technological features of the product in relation to market requirements.

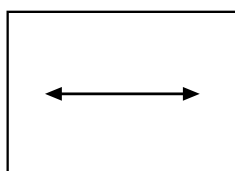


Patty Label is a one side coated paper which has been specially developed for the labels sector. The particular wet-strength treatment makes this paper ideal for a wide variety of applications in bottling when returnable/recyclable bottles are used.

applications

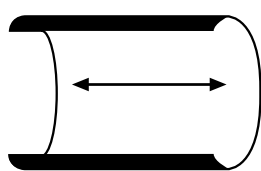
For labelling, always observe the correct indications as regards grain direction. It must be parallel to the base of the bottle (see drawings).

Form of the label

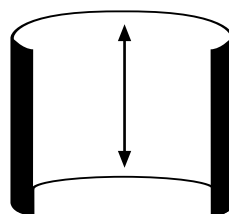


wrap-around label

Rolling after wetting the back of the label.



correct grain direction



wrong grain direction

Can be used without problems with the main printing systems: letterpress, offset, blind embossing, hot foil stamping, thermography, screen printing and bronzing.

printing  
suggestions

In offset printing, performances are equivalent to a normal glossy paper, therefore this paper is printable with the same conditions.

Good results in varnishing, and also with major processing operations such as: cutting, die-cutting.

converting  
suggestions